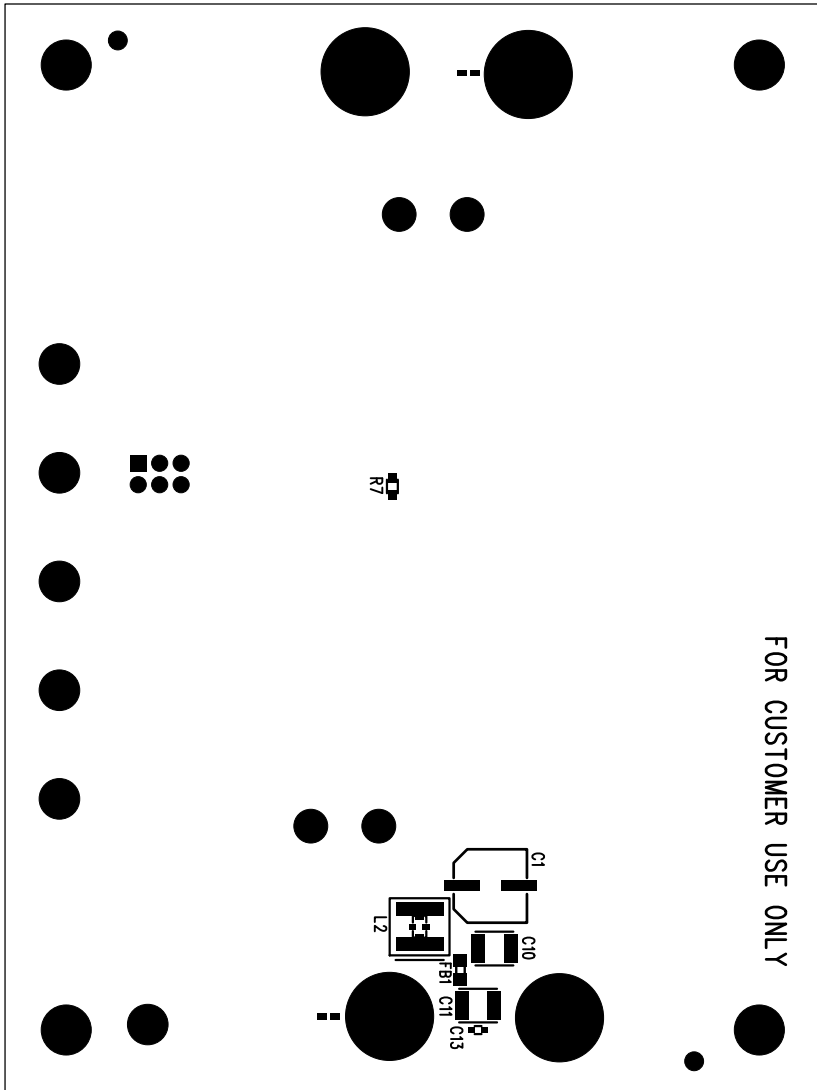


FOR CUSTOMER USE ONLY



**ANALOG
DEVICES**

**POWER BY
LINEAR**

www.analog.com

(408) 432-1900

TITLE: BOTTOM ASSEMBLY DRAWING

42V, 5A SYNCHRONOUS STEP-DOWN

SILENT SWITCHER WITH 2.5uA QUIESCENT CURRENT

SIZE	IC NO.	REV
N/A	LT8636 DC2918A	2

FILENAME: DC2918A-2.PCB

SHT 2 of 2